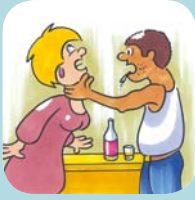


Dintwa tša ka Gae ke eng?



- tlaišo ya mmele



- tlhorišo



- tlaišo ya thobalano



- go tshwenya goba go tsena go bodulo bja mongongoregi ka ntle le tumelelo, moo e lego gore mahlakore bobedi bja wona ga se a hlakanela bodulo



- tlaišo ya maikutlo, mantšu le mogopolo



- tshenyo go ntlo goba dithoto tše dingwe tša mong



- tlaišo ya ekonomi



- maitshwaro afe goba afe a go laola goba a tlaišo go mongongoregi, moo maitshwaro a bjalo a ka hlalago bohloko, goba a ka hlalago bohloko go, polokego, bophelo goba go phela gabotse ga mongongoregi



- tšhošetšo

Bobedi **banna le basadi ba ka bonwa molato** goba ya ba batšwasehlabele ba dintwa tša ka gae.